



**Rafflesia**  
INTERNATIONAL & PRIVATE SCHOOLS

# Rafflesia International School Puchong



 **+6019 279 9088** | **[www.ris.edu.my](http://www.ris.edu.my)**

 **rafflesiainternationalschools** | **[admissions@rafflesia.edu.my](mailto:admissions@rafflesia.edu.my)**

**TRADITIONAL VALUES • GLOBAL VISION**



**Rafflesia**  
INTERNATIONAL & PRIVATE SCHOOLS

*Your future begins*  
**at Rafflesia International School Puchong**

## Quality You Can Trust

Quality Education With Committed Teachers  
and Better Learning Environment



**CAMBRIDGE**  
International Education

*Your School of Choice!*





**Rafflesia**  
INTERNATIONAL & PRIVATE SCHOOLS

# RAFFLESIA INTERNATIONAL SCHOOL PUCHONG

**A Leading IGCSE School**

**TOP QUALITY EDUCATION**  
with **Traditional Values**  
and **Global Vision**



**Our Vision:**  
*To be the School of Choice  
with international recognition*

## **CURRICULUM OFFERED:**

- ✓ **INTERNATIONAL EARLY YEARS CURRICULUM (IEYC)**
- ✓ **INTERNATIONAL PRIMARY CURRICULUM (IPC)**
- ✓ **IGCSE**



# Rafflesia

INTERNATIONAL & PRIVATE SCHOOLS

## *About Us*

Rafflesia Education Group was founded in 2010 by a group of dedicated educationalists, with years of experience in the education industry in Malaysia, with the aim of becoming the school of choice with international recognition.

Rafflesia opens its doors to provide a quality and world-class international education, preparing our young generation for their future.





# Rafflesia

INTERNATIONAL & PRIVATE SCHOOLS

*About Us*

Rafflesia is a 'new generation' international school, not just boasting its state-of-the-art, cutting edge, and eco-friendly facilities to support a progressive teaching and learning environment, but also delivering an internationally-minded curriculum. Taught by highly qualified and experienced international educators from overseas and Malaysia, the programmes of study offered are designed to serve the needs of the next generation of global thinkers, shapers and leaders.

With the philosophy of providing a holistic and yet individualised education for each learner, Rafflesia prepares its students to realise their full potential within a stimulating and challenging international learning community.

Emphasising on the group's vision and mission, Rafflesia aspires to appreciate cultural diversity and a willingness to embrace social and personal responsibility.





# Rafflesia

INTERNATIONAL & PRIVATE SCHOOLS

## VISION

To be the **School of Choice** with international recognition

## MISSION

Nurturing **Talents** for the future



# WHY

## RAFFLESIA INTERNATIONAL SCHOOL PUCHONG?





**Rafflesia**  
INTERNATIONAL & PRIVATE SCHOOLS

# Our Curriculum

Rafflesia International School offers a coherent, inclusive curriculum for progression of students aged between 3-18 years old. This curriculum encompasses the International Early Years Curriculum (IEYC), International Primary Curriculum (IPC) and the Cambridge Curriculum



**CAMBRIDGE**  
International Education

## IEYC

International Early Years Curriculum



## EARLY YEARS

Nursery & Reception  
(AGE 3 TO 5)

At Rafflesia, we believe that each child is unique in the way that they grow and develop. Our curriculum, which is child-centred and activity-based, is specially designed for individual differences in ability and interest.



1

## INDEPENDENCE & INTERDEPENDENCE

Focuses on developing personal, social and emotional development

This strand links to:

- The IEYC Personal Goals
- The IEYC International Dimension

2

## COMMUNICATING

Focuses on communicating through:

- Speaking & listening
- Reading
- Writing
- Number
- Shapes & Measures
- ICT & Computing
- Expressive Arts & Creativity

3

Focuses on developing the skills of enquiry through exploring:

- People
- The world

## ENQUIRING

4

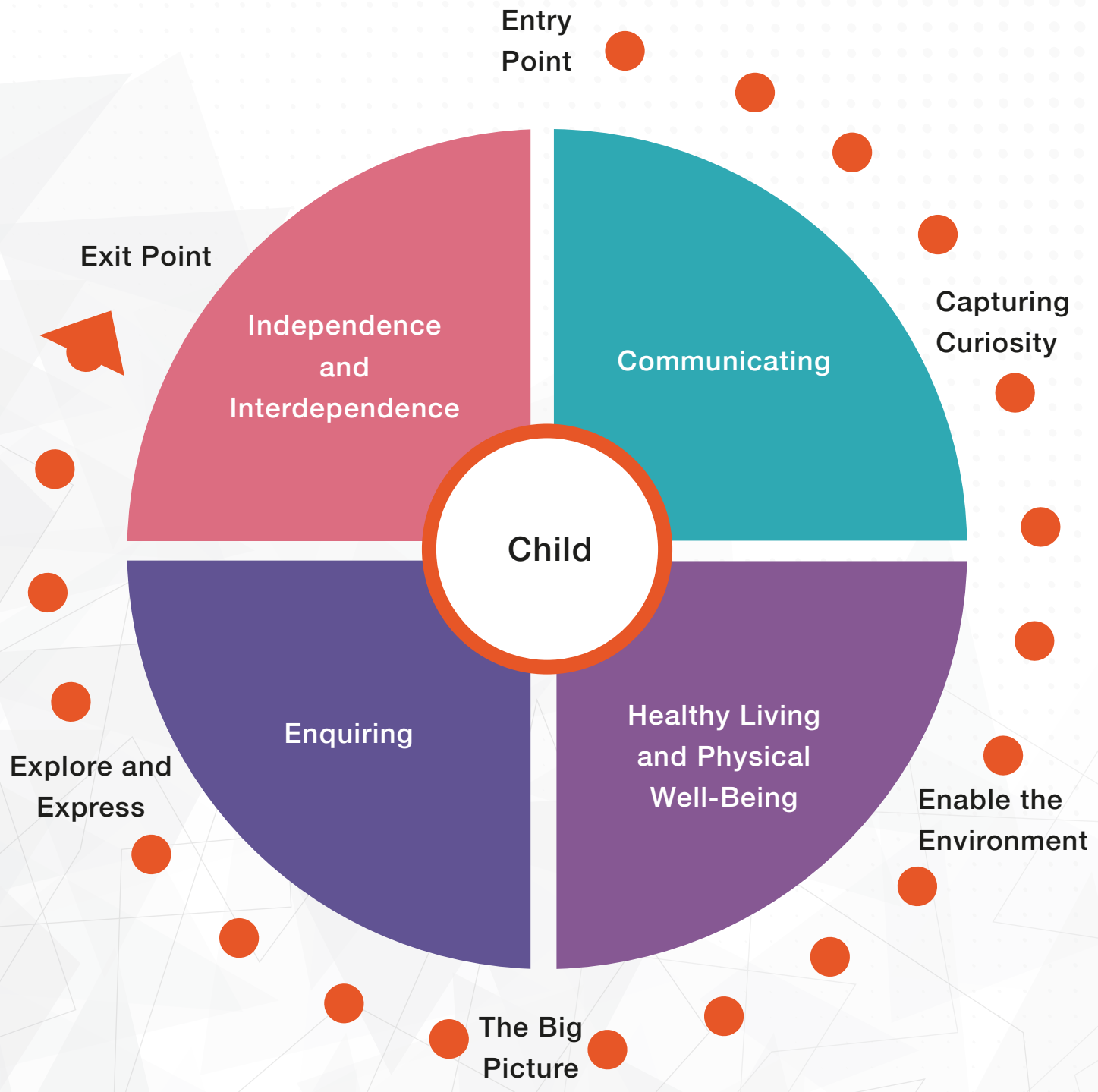
Focuses on developing a positive attitude to:

- Health
- Self care
- Physical activity

## HEALTHY LIVING & PHYSICAL WELL-BEING



# IEYC Learning Process



# IPC

## International Primary Curriculum

YEAR 1-YEAR 6



Our primary studies intertwine thematic and subject-based learning with International mindedness and development of personal learning goals. The IPC Programme prepares the students for smoother progression into secondary studies

Thematic

International mindedness

Creative and Challenging

Global themes, local heritage

**WHY IPC?**

Assessment for learning

Brain-friendly

Personal Development

Skills Focused

Ages 5-6

Milepost 1

Ages 7-8

Milepost 2

Ages 9-10

Milepost 3

## What are the Goals of IPC?

### Subject Goals

#### Learning Goals

Cover the knowledge, skills and understanding of children relating to the subjects they are learning.

#### Subjects

- Science
- History
- Geography
- Technology & Innovation
- Art
- Music
- ICT
- International
- Health & Well-being
- Language Art
- Mathematics

### Personal Goals

These underpin the individual qualities and dispositions that the children need essential in the 21st century.

8

#### IPC Personal Goals

- Adaptable
- Respectful
- Empathetic
- Collaborator
- Thinker
- Resilient
- Ethical
- Communicator

### International Learning Goals

These learning goals are unique and can help young children to develop international mindsets and intercultural perspectives.

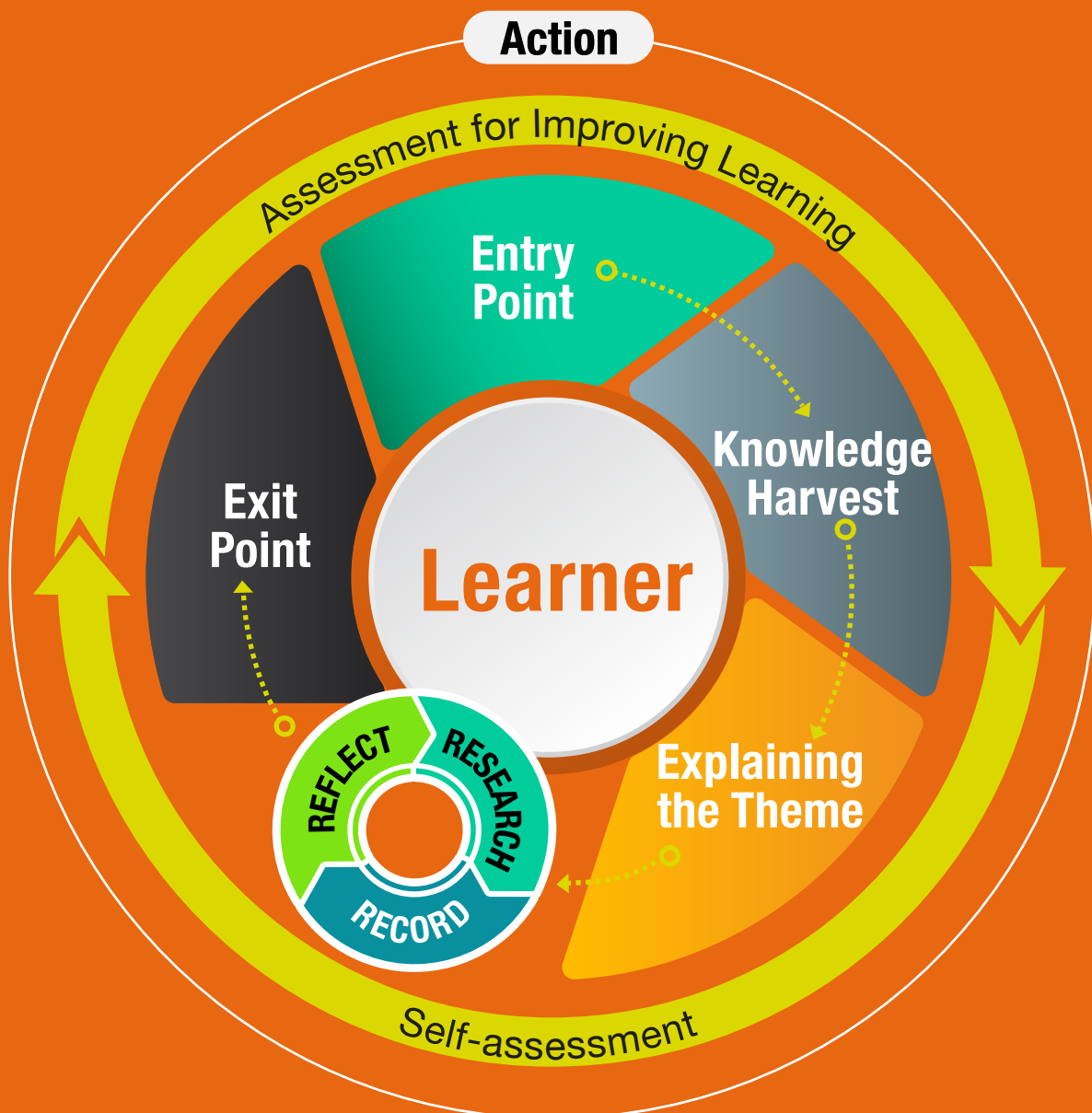
# How do they Learn?



Children learn through a series of IPC units of work which are stimulating with rigorous activities. IPC allows children to make connections in learning across subjects.

The IPC has been designed for children of all abilities and all learning styles, and encourages learning in groups as well as individual learning. It places emphasis on children doing research and recording of their learning.

## IPC Learning Process



# Cambridge Lower Secondary Year 7 - Year 9 (Age 11 to 14)

Shaped by the Cambridge Curriculum, the Cambridge Lower Secondary programme is structured to strengthen and diversify every students' fundamental skills.

Rafflesia students are challenged to discover and achieve their potential while concurrently being assessed by Cambridge Checkpoint examinations. This component evaluates a student's mastery of English, Mathematics and Science, and identifies core strengths to build on. It also provides parents with valuable information so they can assist their child in choosing the right IGCSE subjects to work towards.

# IGCSE Year 10 - Year 11 (Age 14 to 16)

Rafflesia students progressing from Cambridge Lower Secondary will further develop a deeper understanding of the subjects, while continuously improving their skills. This prepares them for the IGCSE Examinations.

Under the IGCSE programme, the students will study a mixture of core, compulsory and optional subjects, i.e. English, Mathematics and Sciences are offered as well as a wide range of elective subjects including Business, Humanities, Social Sciences and Languages.

As 21st century learners, Rafflesia students will be equipped with a creative mindset, problem-solving skills and endless curiosity for knowledge, giving them the springboard they require to thrive and succeed in their future endeavours.



**CAMBRIDGE**  
International Education





**Rafflesia**  
INTERNATIONAL & PRIVATE SCHOOLS

**IGCSE**  
Outstanding Achievement  
of Year 2024/25

**9A\*/A**



LIM  
ZHE YU



LEE JIA BAO  
BERNICE



LAU  
JUN BOND



LEE JIA BEI  
BRENDA



LIM  
WEI TONG



WEE  
YU XIANG



TEOH  
ZHUO XUN



SAMITHA D/O  
THAVANAYAGAM



THOO  
QI ZHENG

*Congratulations!*

TRADITIONAL VALUES · GLOBAL VISION





# Rafflesia

INTERNATIONAL & PRIVATE SCHOOLS

# *Congratulations!*

Proudly Celebrates



**LIEW  
CHENG JIUN**

On His Admission To  
Tsinghua University 2025

Rafflesia International School  
Alumnus (2016 – 2023)

Dream Big. Aim High.  
Achieve Excellence.

**KHOW  
JIN XEN**

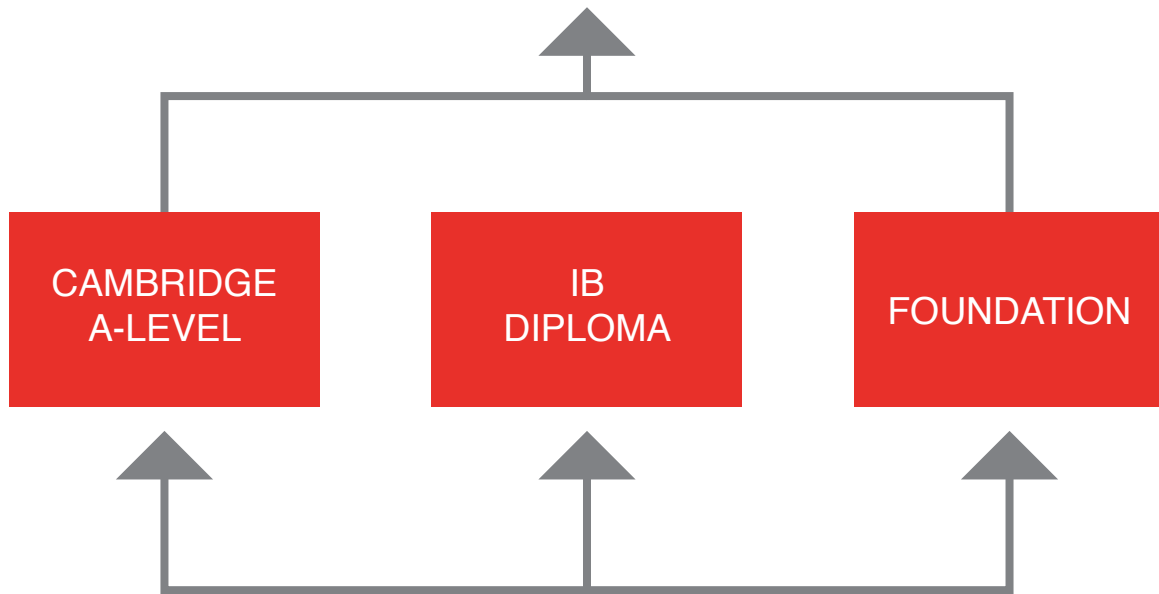
On His Admission  
To Harvard 2026



Rafflesia International School  
Alumnus (2014 – 2024)

# Pathway to Success

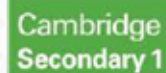
UNIVERSITIES WORLDWIDE



IGCSE (Years 10-11)



CAMBRIDGE SECONDARY 1  
(Years 7-9)



PRIMARY  
(Years 1-6)



EARLY YEARS



RAFFLESIA  
INTERNATIONAL  
SCHOOL

# Co-Curricular Activities (CCA)

Co-Curricular activities are important to help build and form the social dispositions of the students. This is an opportunity for them to further enhance their hidden potentials and talents. We also believe these activities will help students strike a balance between academic excellence and their social responsibilities in line with our holistic education.

## Primary

### 2025/26 Co-Curricular Activities\*

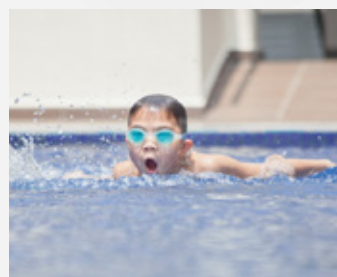
Monday	Wednesday	Friday
Badminton (Coach led)	Creative Art	Maths Wizard Club
Football (Coach led)	Performing Arts (Y4 - Y6)	Beautiful Creation Club
Lego Robotics (Coach led)	Origami Club	Heritage of the World
Taekwondo (Coach led)	Green Guardians	Broadcasting
Street Drum (Coach led)	Let's Dance Club	The Little Scientists
	Chinese Cultural Club (Combined)	Fun Book Club



## Secondary

### 2025/26 Co-Curricular Activities\*

Monday	Wednesday	Friday
Digital Media	Cooking & Baking Club (Y10 - Y11)	Badminton (Coach led)
Editorial & Broadcasting	Origami Club	Fencing (Coach led)
Green Guardians	Performing Arts	Taekwondo (Coach led)
Sports Club (S)	STEAM	24 Season Drums (Coach led)
	Young Entrepreneur Club	Table Tennis (Coach led)
	Chinese Cultural Club (Combined)	Basketball (Coach led)
		Archery (Coach led)



\*Subject to availability and on a first come, first served basis.

\*The asterisk CCAs (\*) are professional coach-led CCAs. An extra fee has to be paid yearly.

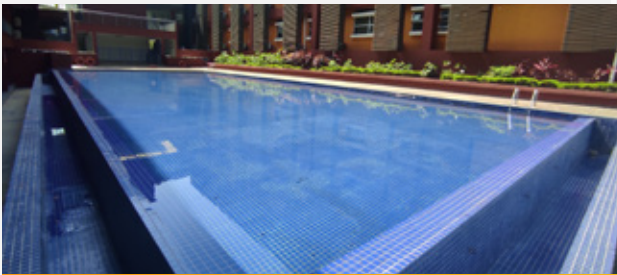
# School Facilities



Classroom



Library



Swimming Pool



ICT Lab



Basketball Court



Lecture Hall



Art Room

# School Facilities



Science Lab



Music Room



Multi-purpose Hall



Cafeteria

# Fee Schedule

## Rafflesia International School Puchong Fee Schedule for Academic Year 2026/2027

Application Fee		RM 1,000	
Registration Fee		RM 3,000	
Stage	Year Group	Tuition Fee Per Term (RM)	Deposit (RM)
Early Years	Nursery	5,411	5,411
	Reception	5,411	5,411
Primary	Year 1	7,800	7,800
	Year 2	7,800	7,800
	Year 3	11,655	11,655
	Year 4	11,655	11,655
	Year 5	11,655	11,655
	Year 6	11,655	11,655
Secondary	Year 7	14,805	14,805
	Year 8	14,805	14,805
	Year 9	14,805	14,805
	Year 10	16,600	16,600
	Year 11	16,600	16,600

### Terms & Conditions:

1. Application fee: Payable upon submission of an application. This fee is non-refundable nor transferable.
2. Registration fee: Payable upon receipt of the Letter of Offer. This fee is one-time off, non-refundable nor transferable.
3. The deposit is to be topped up as the student progresses according to the year level. It is non transferable but refundable, provided that the withdrawal form is submitted to the school **ONE FULL TERM** in advance.
4. Tuition fees are invoiced termly. These fees are payable before or by the due date stated in the said invoice. All fees paid are neither transferable, refundable nor prorated.
5. There are three (3) terms in an academic year.
6. Meal plan, uniform, textbook & exercise books, education digital device, CCA fee, oversea outstation trip, exam fee and any other applicable fees are not included in the tuition fees and will be billed separately.
7. All fees are subject to review and the management reserves the right to revise the terms and conditions.

# Payment methods and banking details

Payment can be made by either one of the following methods: Cash / Crossed cheque / Bank draft / Online / Telegraphic Transfer.

<b>CHEQUES PAYABLE TO</b>	Rafflesia School (Puchong) Sdn Bhd
<b>BANK TRANSFER</b>	For payment made Online or via Telegraphic Transfer, please use the following bank details
<b>ACCOUNT NUMBER</b>	23000010293
<b>BANK NAME</b>	Hong Leong Bank Berhad
<b>SWIFT CODE</b>	HLBBMYKL
<b>CONTACT DETAILS</b>	Rafflesia International School Puchong Persiaran Sierra 2, Bandar 16 Sierra, 47100 Puchong, Selangor, Malaysia.  Tel: +603 8953 9088 Handphone: 019 279 9088 W: <a href="http://www.ris.edu.my">www.ris.edu.my</a> E: <a href="mailto:admissions@rafflesia.edu.my">admissions@rafflesia.edu.my</a>

*Note:*

*Please forward a copy of the transaction report to the School's Finance Office via email [finance@rafflesia.edu.my](mailto:finance@rafflesia.edu.my) stating name of student and year group.*

**The information presented in this brochure is accurate at time of publishing and subject to change without prior notice.**

# WHERE ARE WE?



## PUCHONG CAMPUS

Persiaran Sierra 2, Bandar 16 Sierra,  
47100 Puchong, Selangor, Malaysia.

+603 8953 9088

admissions@rafflesia.edu.my

+6019 279 9088

### FOLLOW US!

rafflesiainternationalschools

rafflesiaschools

Rafflesia International & Private Schools

[www.ris.edu.my](http://www.ris.edu.my)