



# Rafflesia

INTERNATIONAL & PRIVATE SCHOOLS

## Rafflesia International School Kajang



☎ 019 390 8381 KAJANG | [www.ris.edu.my](http://www.ris.edu.my)

f [rafflesiainternationalschools](https://www.facebook.com/rafflesiainternationalschools) | [admissions.kajang@rafflesia.edu.my](mailto:admissions.kajang@rafflesia.edu.my)

TRADITIONAL VALUES • GLOBAL VISION



**Rafflesia**  
INTERNATIONAL & PRIVATE SCHOOLS

*Congratulations!*  
**IGCSE RESULTS**

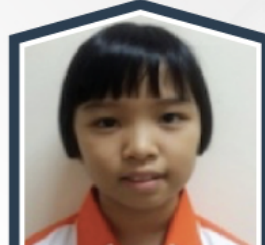
**CLASS OF 2021**

**9A\*, 1A**



**Lau Wei Sin**

**9A\*, 1A**



**Sabrina Soon Xing Hui**

**8A\*, 2A**



**Teh Kah Xuan**

**8A\*, 1A**



**Lim Shin Tuan**

**7A\*, 2A**



**Lau Wei Ying**

**6A\***



**Sunay**

**5A\*, 2A**



**Tan Yan Min**

**4A\*, 5A**



**Tan Kang Yu**

**3A\*, 3A**



**Kwan Qing Fung**

**3A\*, 2A**



**Shia Zhee Yeng**

**2A\*, 6A**



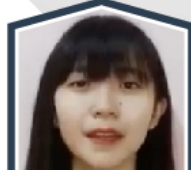
**Ethan Liam Poon Yi**

**2A\*, 5A**



**Phang Xi Er**

**2A\*, 6A**



**Phang Sher Myn**

**2A\*, 3A**



**Tan Hui Ai**



**Cambridge Assessment  
International Education**  
Cambridge International School

*We Did It!*





**Rafflesia**  
INTERNATIONAL & PRIVATE SCHOOLS

# RAFFLESIA INTERNATIONAL SCHOOL KAJANG

**A Leading IGCSE School**

**TOP QUALITY EDUCATION**

with **Traditional Values**

and **Global Vision**



***Our Vision:***

***To be the School of Choice  
with international recognition***

## **CURRICULUM OFFERED:**

- ✓ **INTERNATIONAL EARLY YEARS CURRICULUM (IEYC)**
- ✓ **INTERNATIONAL PRIMARY CURRICULUM (IPC)**
- ✓ **IGCSE**



**Rafflesia**  
INTERNATIONAL & PRIVATE SCHOOLS

# Our Curriculum

Rafflesia International School offers a coherent, inclusive curriculum for progression of students aged between 3-18 years old. This curriculum encompasses the International Early Years Curriculum (IEYC), International Primary Curriculum (IPC) and the Cambridge Curriculum



**Cambridge Assessment  
International Education**

Cambridge International School

## IEYC

International Early Years Curriculum



## EARLY YEARS

Nursery & Reception  
(AGE 3 TO 5)

At Rafflesia, we believe that each child is unique in the way that they grow and develop. Our curriculum, which is child-centred and activity-based, is specially designed for individual differences in ability and interest.



1

## INDEPENDENCE & INTERDEPENDENCE

**Focuses on developing personal, social and emotional development**

**This strand links to:**

- The IEYC Personal Goals
- The IEYC International Dimension

2

## COMMUNICATING

**Focuses on communicating through:**

- Speaking & listening
- Reading
- Writing
- Number
- Shapes & Measures
- ICT & Computing
- Expressive Arts & Creativity

3

**Focuses on developing the skills of enquiry through exploring:**

- People
- The world

## ENQUIRING

4

**Focuses on developing a positive attitude to:**

- Health
- Self care
- Physical activity

## HEALTHY LIVING & PHYSICAL WELL-BEING





# IEYC Learning Process



# IPC

## International Primary Curriculum

### YEAR 1-YEAR 6



Our primary studies intertwine thematic and subject-based learning with International mindedness and development of personal learning goals. The IPC Programme prepares the students for smoother progression into secondary studies

Thematic

International  
mindedness

Creative  
and  
Challenging

Global themes,  
local heritage

**WHY  
IPC?**

Assessment  
for  
learning

Brain-friendly

Personal  
Development

Skills  
Focused

**Ages 5-6**

**Milepost 1**

**Ages 7-8**

**Milepost 2**

**Ages 9-10**

**Milepost 3**

## What are the Goals of IPC?

### Subject Goals

#### Learning Goals

Cover the knowledge, skills and understanding of children relating to the subjects they are learning.

#### Subjects

- Science
- History
- Geography
- Technology & Innovation
- Art
- Music
- ICT
- International
- Health & Well-being
- Language Art
- Mathematics

### Personal Goals

These underpin the individual qualities and dispositions that the children need essential in the 21st century.

**8**

#### IPC Personal Goals

- Adaptable
- Respectful
- Empathetic
- Collaborator
- Thinker
- Resilient
- Ethical
- Communicator

### International Learning Goals

These learning goals are unique and can help young children to develop international mindsets and intercultural perspectives.



# How do they Learn?

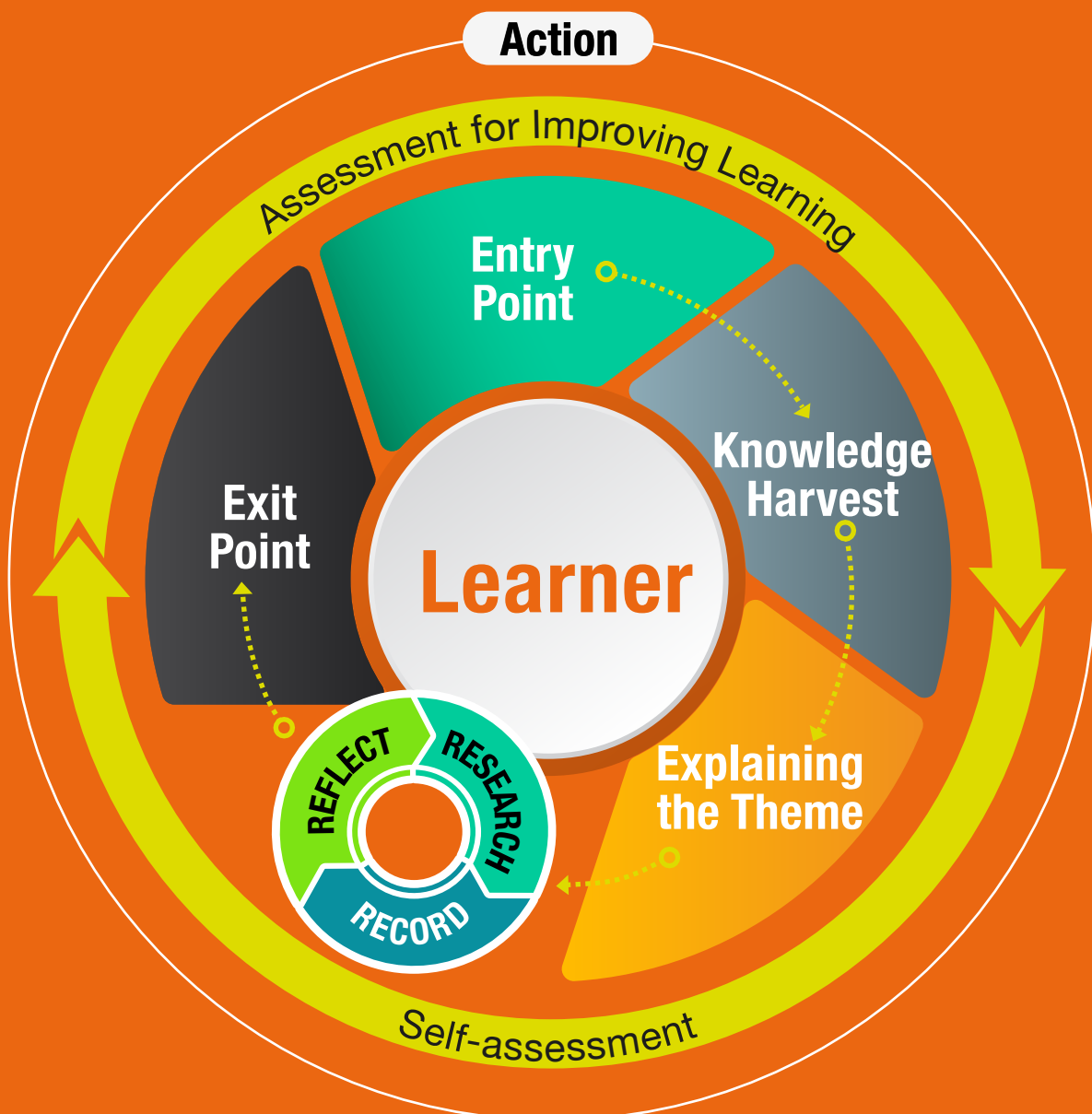


Children learn through a series of IPC units of work which are stimulating with rigorous activities. IPC allows children to make connections in learning across subjects.

The IPC has been designed for children of all abilities and all learning styles, and encourages learning in groups as well as individual learning. It places emphasis on children doing research and recording of their learning.



## IPC Learning Process



# Cambridge Secondary 1 Year 7 - Year 9 (Age 11 to 14)

Shaped by the Cambridge Curriculum, the Cambridge Secondary 1 programme is structured to strengthen and diversify every students' fundamental skills.

Rafflesia students are challenged to discover and achieve their potential while concurrently being assessed by Cambridge Checkpoint examinations. This component evaluates a student's mastery of English, Mathematics and Science, and identifies core strengths to build on. It also provides parents with valuable information so they can assist their child in choosing the right IGCSE subjects to work towards.

# IGCSE Year 10 - Year 11 (Age 14 to 16)

Rafflesia students progressing from Cambridge Secondary 1 will further develop a deeper understanding of the subjects, while continuously improving their skills. This prepares them for the IGCSE Examinations.

Under the IGCSE programme, the students will study a mixture of core, compulsory and optional subjects, i.e. English, Mathematics and Sciences are offered as well as a wide range of elective subjects including Business, Humanities, Social Sciences and Languages.

As 21st century learners, Rafflesia students will be equipped with a creative mindset, problem-solving skills and endless curiosity for knowledge, giving them the springboard they require to thrive and succeed in their future endeavours.



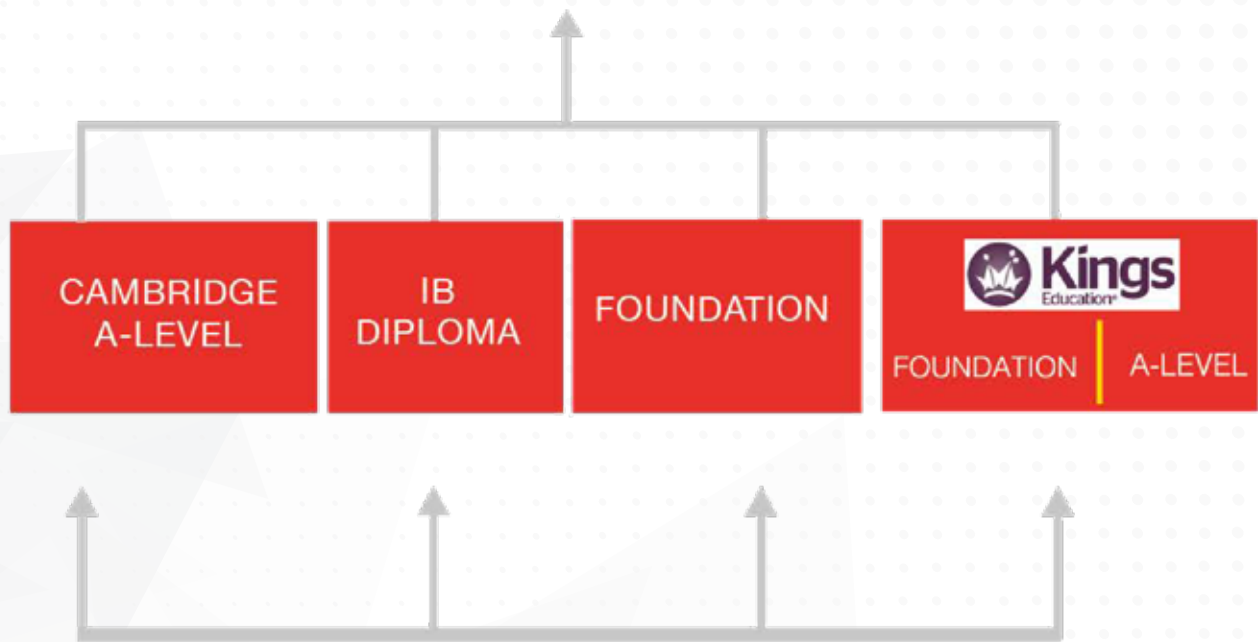
**Cambridge Assessment  
International Education**

Cambridge International School



# Pathway to Success

UNIVERSITIES WORLDWIDE



RAFFLESIA  
INTERNATIONAL  
SCHOOL

IGCSE ( Years 10-11 )

 Cambridge Assessment  
International Education  
Cambridge International School

CAMBRIDGE SECONDARY 1  
( Years 7-9 )

 Cambridge  
Secondary 1

PRIMARY  
( Years 1-6 )

 ipc

EARLY YEARS

 ieyc





# CO-CURRICULAR ACTIVITIES CCA

Co-curricular activities are important to help build and form the social dispositions of the students. This is an opportunity for them to further enhance their hidden potentials and talents. We also believe these activities will help students strike a balance between academic excellence and their social responsibilities in line with our holistic education.





# School Facilities



Classroom



Library



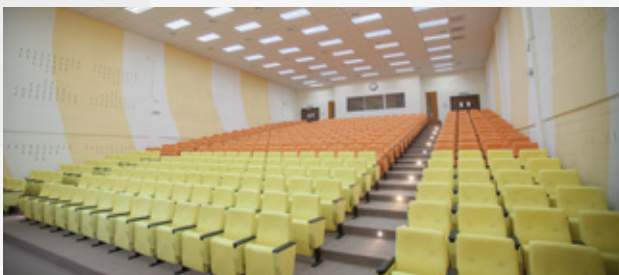
Swimming Pool



ICT Lab



Basketball Court



Lecture Hall



Tennis Court

# School Facilities



Playground



Science Lab



Gym



Music Room



Multi-purpose Hall



Cafeteria



Art Room



# We Teach • We Care • We Assist

**MORE AFFORDABLE FEE**  
Without compromising educational quality

during these unprecedented and challenging times.

**BIG FEE  
PROMOTION!**

EXCLUSIVELY FOR  
**NURSERY, RECEPTION,  
YEAR 1 & 2,  
YEAR 7 & 8**

\*T&C APPLY

\*The promotional fees is applicable only to newly enrolled students.

## Fee Schedule

### Rafflesia International School Kajang Fee Schedule for Academic Year 2022/2023

Application Fee		RM 1,000	
Registration Fee		RM 5,000	
Stage	Year Group	Tuition Fee Per Term (RM)	Deposit (RM)
Early Years	Nursery	4,180	4,180
	Reception	4,180	4,180
Primary	Year 1	5,100	5,100
	Year 2	5,800	5,800
	Year 3	6,900	6,900
	Year 4	7,500	7,500
	Year 5	8,200	8,200
	Year 6	8,500	8,500
Secondary	Year 7	8,900	8,900
	Year 8	9,500	9,500
	Year 9	10,500	10,500
	Year 10	11,500	11,500
	Year 11	11,500	11,500

#### Important Notes:

1. Application Fee: Payable upon submission of an Application form. This fee is not refundable nor transferable.
2. Registration Fee: Payable upon receipt of the letter of Offer. This fee is a one-off payment, not refundable nor transferable.
3. The deposit is to be topped up as the student progresses according to the year level. It is non-transferable but refundable, provided that one **FULL** term's written notice of withdrawal in advance is submitted to the school.
4. All fees must be paid before the commencement of the academic year. These fees are not refundable nor transferable and they cannot be prorated.
5. Tuition Fees are payable termly, there are three (3) terms in an academic year.
6. Tuition Fees are invoiced termly. These fees are payable on or before end of current term.
7. Meal plan, uniform, books (text books, e-books, workbooks & exercise books), educational digital apps, resources fee, co-curricular activities, overseas/outstation trip, educational trip and insurance will be billed separately.
8. All external exam fees are borne by students.
9. All fees are subjected to review and the management reserves the right to revise the terms and conditions.

# Payment methods and banking details

Payment can be made by either one of the following methods: Cash / Crossed cheque / Bank draft / Online / Telegraphic Transfer.

<b>CHEQUES PAYABLE TO</b>	Rafflesia School (Kajang) Sdn Bhd
<b>BANK TRANSFER</b>	For payment made Online or via Telegraphic Transfer, please use the following bank details
<b>ACCOUNT NUMBER</b>	23000010286
<b>BANK NAME</b>	Hong Leong Bank Berhad
<b>SWIFT CODE</b>	HLBBMYKL
<b>CONTACT DETAILS</b>	<p>Rafflesia International School Kajang Jalan Kajang 2 Utama, Seksyen 2, Kajang 2, 43000 Kajang, Selangor .</p> <p>Tel: +603 8741 7099 Handphone: 019 390 8381 W: <a href="http://www.ris.edu.my">www.ris.edu.my</a> E: <a href="mailto:admissions.kajang@rafflesia.edu.my">admissions.kajang@rafflesia.edu.my</a></p>

**Note:**

Please forward a copy of the transaction report to the School's Finance Office via email **[finance.kajang@rafflesia.edu.my](mailto:finance.kajang@rafflesia.edu.my)** stating name of student and year group.

The information presented in this brochure is accurate at time of publishing and subject to change without prior notice. Rafflesia International School Kajang does not accept liability for any error or omission.

# WHERE ARE WE?



## KAJANG CAMPUS

Jalan Kajang 2 Utama, Seksyen 2,  
Kajang 2, 43000 Kajang, Selangor, Malaysia

+603 8741 7099

admissions.kajang@rafflesia.edu.my

+6019 390 8381

### FOLLOW US!

rafflesiainternationalschools

ris.edu.my

Rafflesia International & Private Schools

[www.ris.edu.my](http://www.ris.edu.my)