



Rafflesia

INTERNATIONAL & PRIVATE SCHOOLS

Rafflesia International School Puchong



☎ 019 279 9088 PUCHONG | www.ris.edu.my

f [rafflesiainternationalschools](https://www.facebook.com/rafflesiainternationalschools) | admissions.puchong@rafflesia.edu.my

TRADITIONAL VALUES • GLOBAL VISION



Rafflesia
INTERNATIONAL & PRIVATE SCHOOLS

Your future begins
at Rafflesia International School Puchong

Quality You Can Trust

Quality Education With Committed Teachers
and Better Learning Environment



Cambridge Assessment
International Education

Cambridge International School

A **Kings** International School Partner



Kings
Education for Life
in the UK

Your School of Choice!





Rafflesia
INTERNATIONAL & PRIVATE SCHOOLS

RAFFLESIA INTERNATIONAL SCHOOL PUCHONG

A Leading IGCSE School

TOP QUALITY EDUCATION

with **Traditional Values**

and **Global Vision**

Our Vision:

*To be the School of Choice
with international recognition*

CURRICULUM OFFERED:

- ✓ **INTERNATIONAL EARLY YEARS CURRICULUM (IEYC)**
- ✓ **INTERNATIONAL PRIMARY CURRICULUM (IPC)**
- ✓ **IGCSE**
- ✓ **A-LEVELS**



Rafflesia

INTERNATIONAL & PRIVATE SCHOOLS

About Us

Rafflesia Education Group was founded in 2010 by a group of dedicated educationalists, with years of experience in the education industry in Malaysia, with the aim of becoming the school of choice with international recognition.

Rafflesia opens its doors to provide a quality and world-class international education, preparing our young generation for their future.





Rafflesia

INTERNATIONAL & PRIVATE SCHOOLS

About Us

Rafflesia is a 'new generation' international school, not just boasting its state-of-the-art, cutting edge, and eco-friendly facilities to support a progressive teaching and learning environment, but also delivering an internationally-minded curriculum. Taught by highly qualified and experienced international educators from overseas and Malaysia, the programmes of study offered are designed to serve the needs of the next generation of global thinkers, shapers and leaders.

With the philosophy of providing a holistic and yet individualised education for each learner, Rafflesia prepares its students to realise their full potential within a stimulating and challenging international learning community.

Emphasising on the group's vision and mission, Rafflesia aspires to appreciate cultural diversity and a willingness to embrace social and personal responsibility.





Rafflesia

INTERNATIONAL & PRIVATE SCHOOLS

VISION

To be the **School of Choice** with international recognition

MISSION

To Provide:

- A strong foundation to develop life-related skills and competencies
- Quality education with global vision and traditional values
- Experiential learning
- Qualified, experienced and caring staff
- A connected learning environment and community
- Enjoyment in learning, taking place in a relaxed, yet purposeful atmosphere
- The very best combination of eastern and western educational approaches
- Preparation for life in the 21st century as international citizens
- Smooth progression to tertiary education

PHILOSOPHY

We believe in **holistic and individualised** education to maximise the full potential of each and every student.



WHY

**RAFFLESIA
INTERNATIONAL
SCHOOL
PUCHONG?**





Rafflesia
INTERNATIONAL & PRIVATE SCHOOLS

Our Curriculum

Rafflesia International School offers a coherent, inclusive curriculum for progression of students aged between 3-18 years old. This curriculum encompasses the International Early Years Curriculum (IEYC), International Primary Curriculum (IPC) and the Cambridge Curriculum



**Cambridge Assessment
International Education**

Cambridge International School

IEYC

International Early Years Curriculum



EARLY YEARS

Nursery & Reception
(AGE 3 TO 5)

At Rafflesia, we believe that each child is unique in the way that they grow and develop. Our curriculum, which is child-centred and activity-based, is specially designed for individual differences in ability and interest.



1

INDEPENDENCE & INTERDEPENDENCE

Focuses on developing personal, social and emotional development

This strand links to:

- The IEYC Personal Goals
- The IEYC International Dimension

2

COMMUNICATING

Focuses on communicating through:

- Speaking & listening
- Reading
- Writing
- Number
- Shapes & Measures
- ICT & Computing
- Expressive Arts & Creativity

3

Focuses on developing the skills of enquiry through exploring:

- People
- The world

ENQUIRING

4

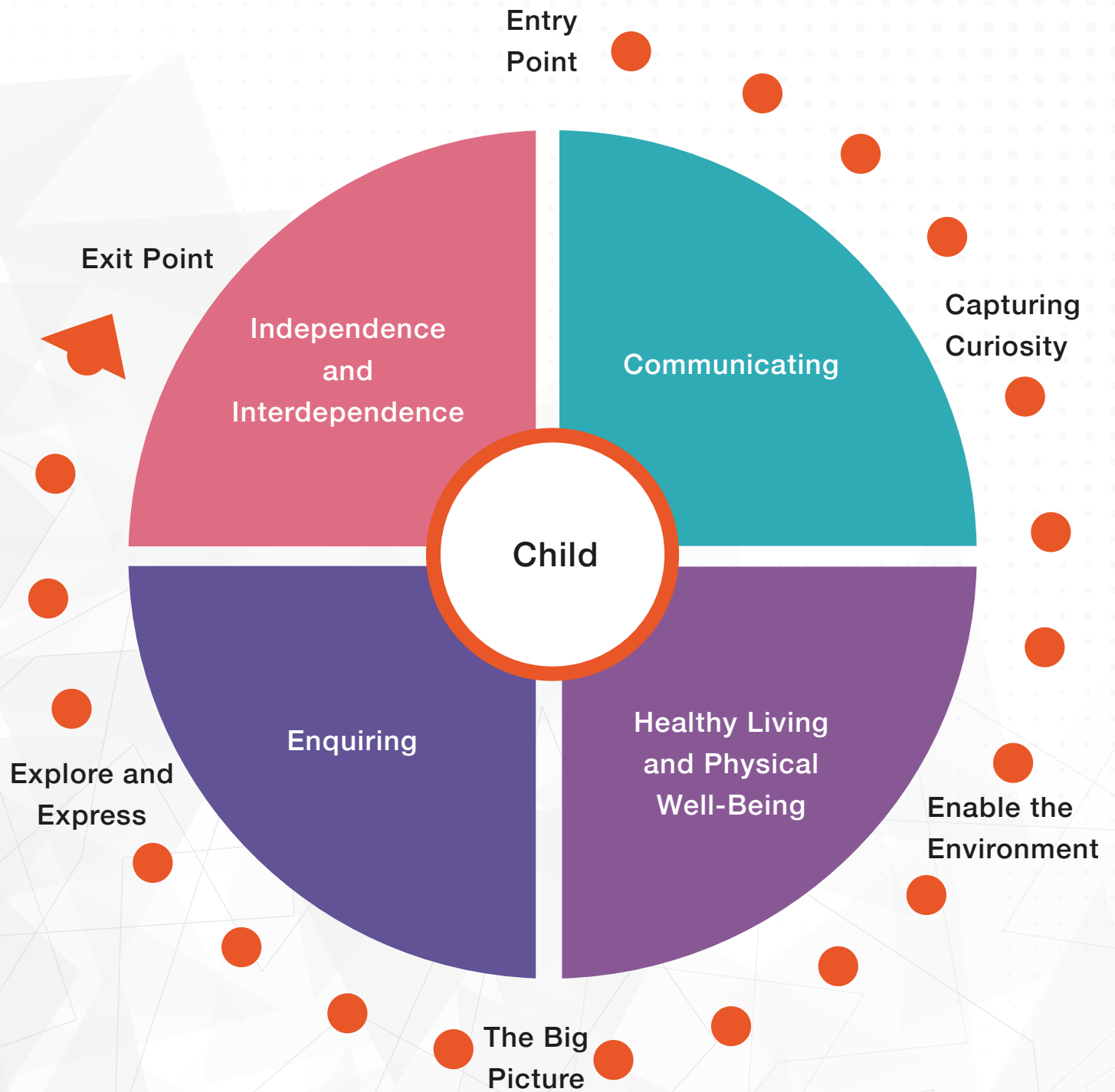
Focuses on developing a positive attitude to:

- Health
- Self care
- Physical activity

HEALTHY LIVING & PHYSICAL WELL-BEING



IEYC Learning Process



IPC

International Primary Curriculum

YEAR 1-YEAR 6



Our primary studies intertwine thematic and subject-based learning with International mindedness and development of personal learning goals. The IPC Programme prepares the students for smoother progression into secondary studies

Thematic

International
mindedness

Creative
and
Challenging

Global themes,
local heritage

**WHY
IPC?**

Assessment
for
learning

Brain-friendly

Skills
Focused

Personal
Development

Ages 5-6

Milepost 1

Ages 7-8

Milepost 2

Ages 9-10

Milepost 3

What are the Goals of IPC?

Subject Goals

Learning Goals

Cover the knowledge, skills and understanding of children relating to the subjects they are learning.

Subjects

- Science
- History
- Geography
- Technology & Innovation
- Art
- Music
- ICT
- International
- Health & Well-being
- Language Art
- Mathematics

Personal Goals

These underpin the individual qualities and dispositions that the children need essential in the 21st century.

8

IPC Personal Goals

- Adaptable
- Respectful
- Empathetic
- Collaborator
- Thinker
- Resilient
- Ethical
- Communicator

International Learning Goals

These learning goals are unique and can help young children to develop international mindsets and intercultural perspectives.

How do they Learn?

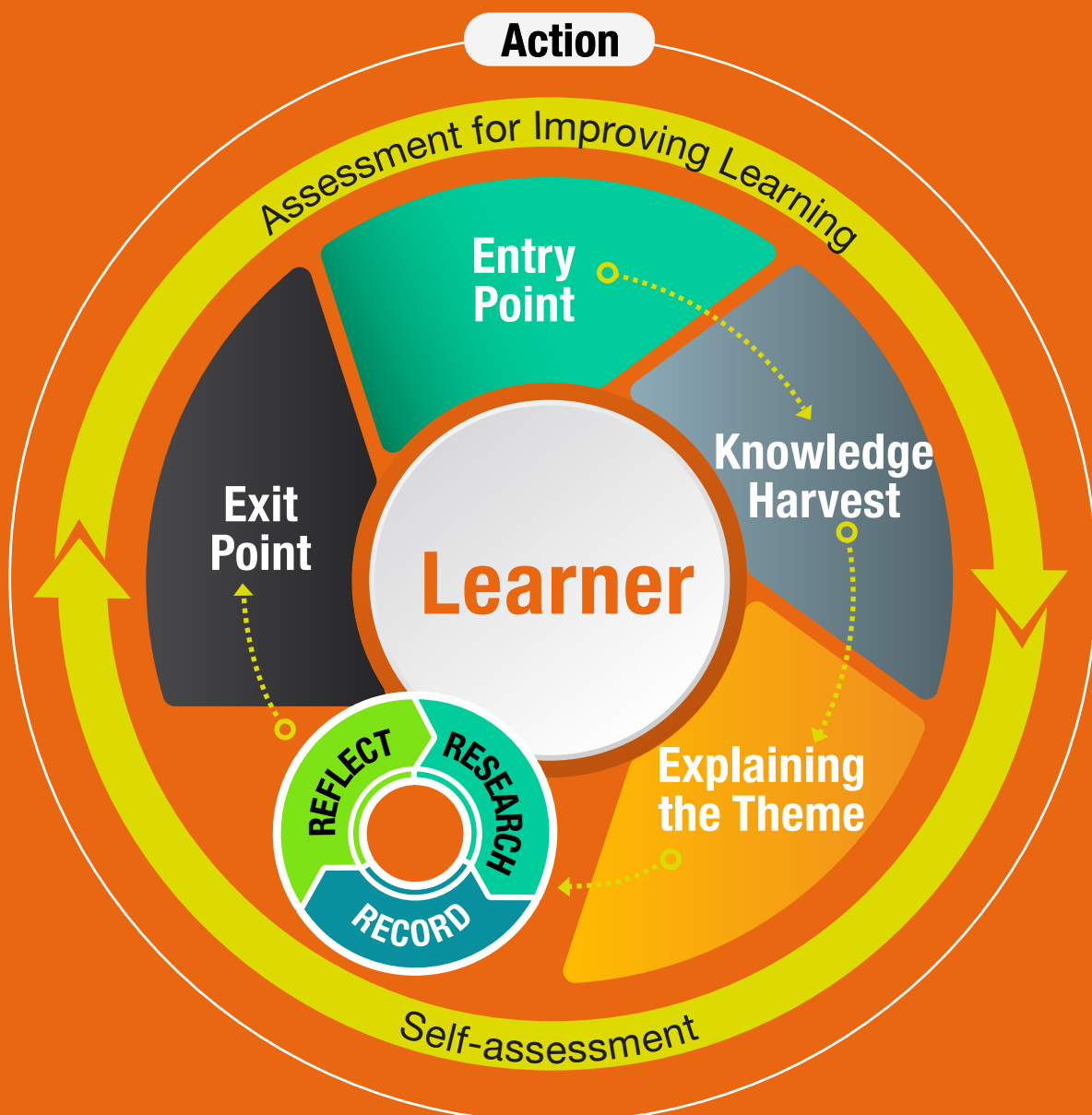


Children learn through a series of IPC units of work which are stimulating with rigorous activities. IPC allows children to make connections in learning across subjects.

The IPC has been designed for children of all abilities and all learning styles, and encourages learning in groups as well as individual learning. It places emphasis on children doing research and recording of their learning.



IPC Learning Process



Cambridge Secondary 1 Year 7 - Year 9 (Age 11 to 14)

Shaped by the Cambridge Curriculum, the Cambridge Secondary 1 programme is structured to strengthen and diversify every students' fundamental skills.

Rafflesia students are challenged to discover and achieve their potential while concurrently being assessed by Cambridge Checkpoint examinations. This component evaluates a student's mastery of English, Mathematics and Science, and identifies core strengths to build on. It also provides parents with valuable information so they can assist their child in choosing the right IGCSE subjects to work towards.

IGCSE Year 10 - Year 11 (Age 14 to 16)

Rafflesia students progressing from Cambridge Secondary 1 will further develop a deeper understanding of the subjects, while continuously improving their skills. This prepares them for the IGCSE Examinations.

Under the IGCSE programme, the students will study a mixture of core, compulsory and optional subjects, i.e. English, Mathematics and Sciences are offered as well as a wide range of elective subjects including Business, Humanities, Social Sciences and Languages.

As 21st century learners, Rafflesia students will be equipped with a creative mindset, problem-solving skills and endless curiosity for knowledge, giving them the springboard they require to thrive and succeed in their future endeavours.



**Cambridge Assessment
International Education**

Cambridge International School





Rafflesia

INTERNATIONAL & PRIVATE SCHOOLS

Congratulations!

You did it! Even in these challenging times of pandemic, you have persevered and worked hard in achieving exceptional results in your IGCSE.

Academic Year	A* - C	A* - B	A* - A
2018/19	90%	82%	70%
2019/20	92%	87%	82%
2020/21	95%	90%	87%



Rafflesia
INTERNATIONAL & PRIVATE SCHOOLS

Congratulations!

IGCSE 2021 HIGH ACHIEVERS

100%
A* - B

- Chinese - Second Language
- Chinese (Mandarin) - Foreign language
- Malay - Foreign language

10A*s



Hermione Tan Xue Teng

10A*s



Wong Joey

7A*s 3As



Arvind Seelean

7A*s 3As



Lee Jia Ai

7A*s 2As



Bryan Ong Wen Jien

6A*s 2As



Lee Jason

5A*s 2As



Camelia Foo Zhi Qing

5A*s 2As



Loh Yong Zhen

2A*s 4As



Lim Yan Rong

3A*s 2As



Nur Nazeeha Binti Nazim

Cambridge International A Levels

Thousands of learners worldwide gain places at leading universities every year with Cambridge International A Levels. The syllabuses develop a deep understanding of subjects and independent thinking skills.

Studying A-Levels at Rafflesia International School gives students the best possible preparation for university. The A Level course will commence in September every year for students who completed their IGCSE/O Level examinations or equivalent.

Students studying their A-Levels at Rafflesia International School will have access to state-of-the-art facilities and the support of experienced international school teachers. Our focus is to give our students the best possible preparation for higher education, and we are committed to providing everything our pupils need to ensure a bright future.

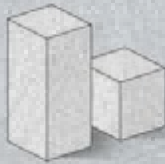
Our A-levels curriculum offers the choice of a range of subjects so students can follow their strengths, interests and career aspirations.

- English
- Mathematics
- Economics
- Business Studies
- Chemistry
- Physics
- Biology
- Law





Rafflesia
INTERNATIONAL & PRIVATE SCHOOLS



NEW

We are proud to introduce

AI AND ROBOTICS

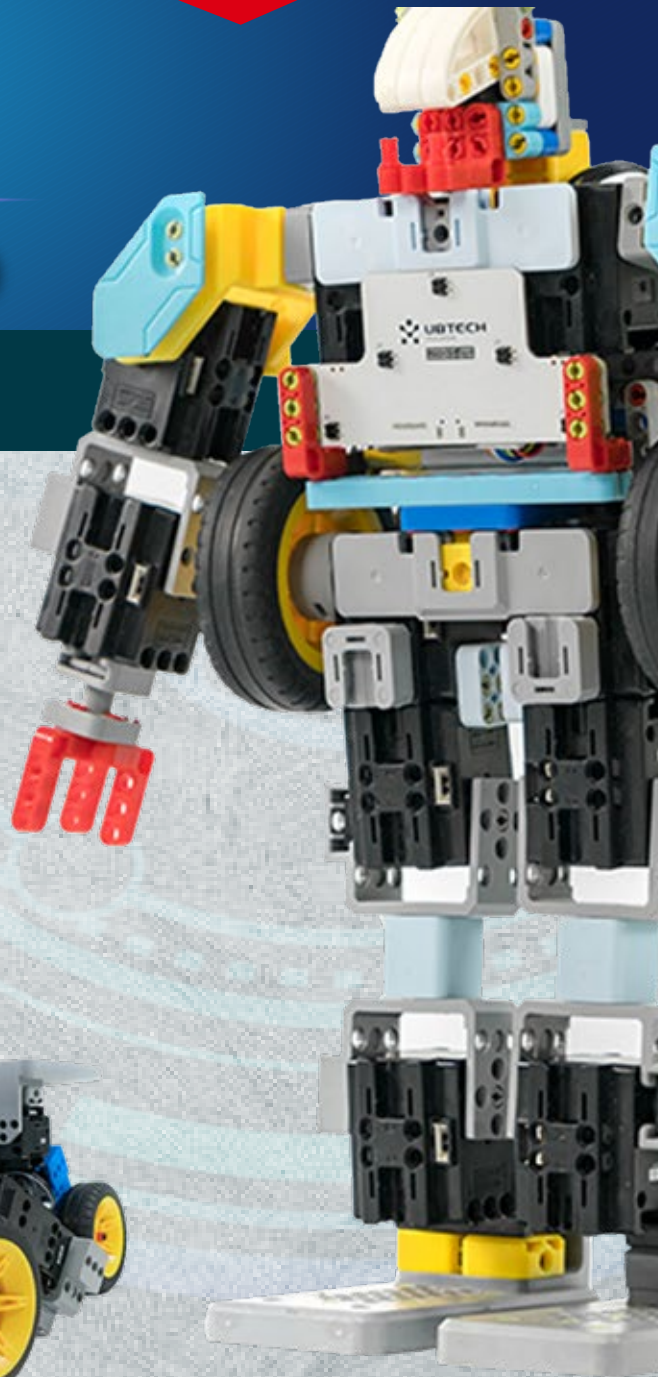
EDUCATION PROGRAMME

Artificial Intelligence (AI) Courses

BRINGING AI TO LIFE

The carefully structured AI programme will be an important part of the school curriculum. It will enable students to develop essential coding and programming skills with meaningful links to learning other subjects such as Mathematics and Science.

This program will equip the students with the programming language of C, C++ or Python which is commonly used in the near future.





AI Intelligent Maker Series Curriculum

In preparing our students to thrive in a world where artificial intelligence is an integral part of their lives and careers of today and tomorrow, Rafflesia International School is implementing the AI Intelligent Maker Series Curriculum, which meets the learning needs of students of different ages, levels and interests.

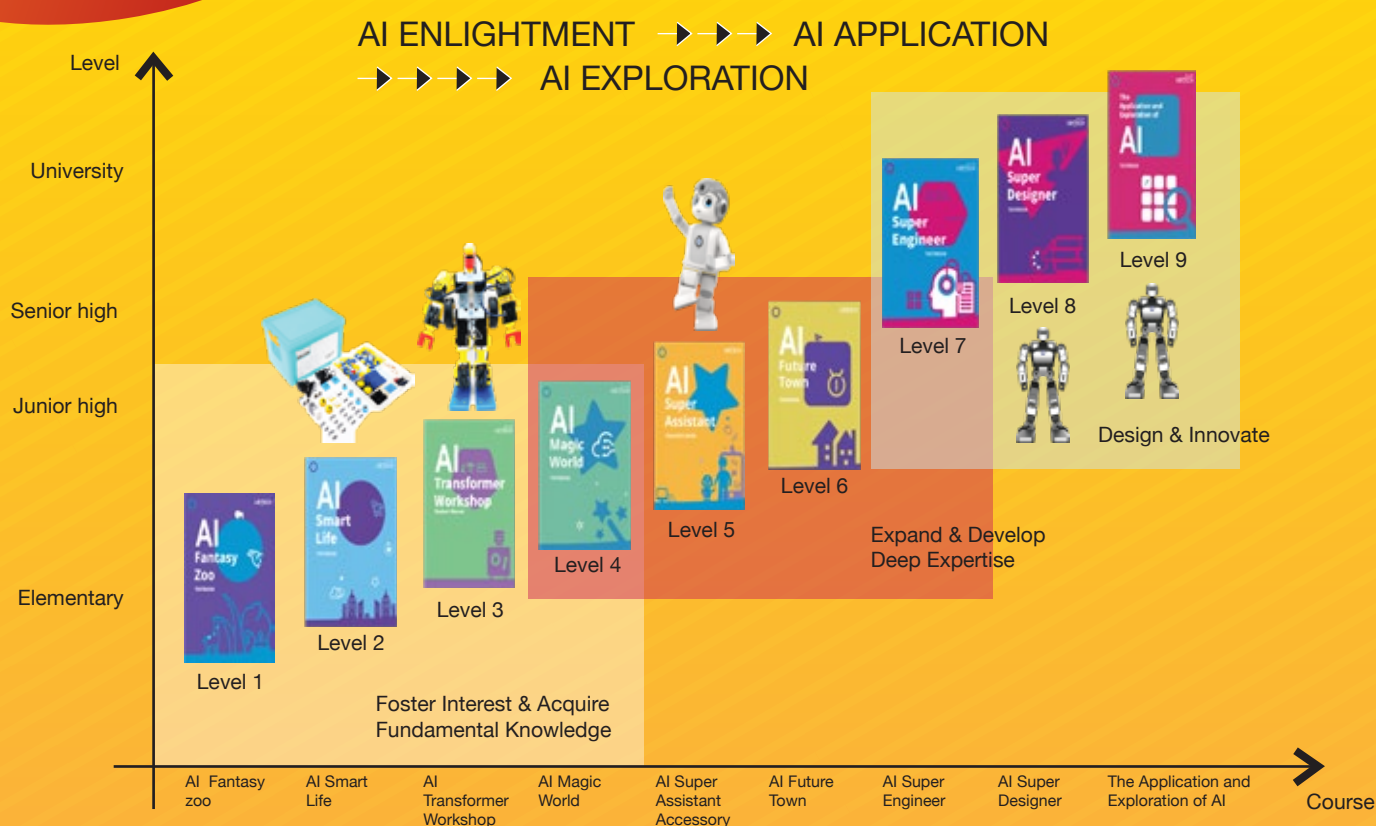
Curriculum Key Highlights

- ✓ Comprehensive robotics syllabus from elementary school to research study.
- ✓ It is an end-to-end syllabus covering the essential learning path rather than the numerous modules offered in the market.

The curriculum is planned with teaching kits for teachers to implement their lessons for appropriate levels.

In addition a progression road map is provided to chart the student progress in their stages of development.

Progression Road Map





Rafflesia
INTERNATIONAL & PRIVATE SCHOOLS

Jobs of the Future

Rafflesia
INTERNATIONAL & PRIVATE SCHOOLS

Rafflesia
PRIVATE SCHOOLS

**Let's nurture
artificial
intelligence
talents
together !**

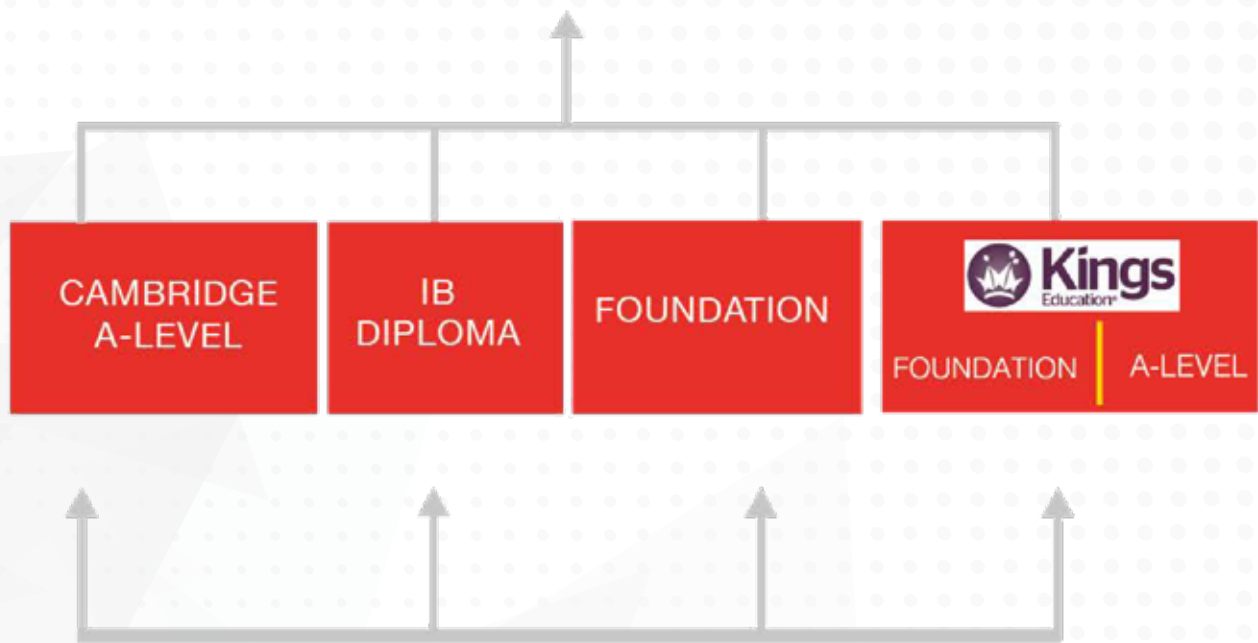
**ARTIFICIAL
INTELLIGENCE**

OPENS A WORLD OF OPPORTUNITIES



Pathway to Success

UNIVERSITIES WORLDWIDE



RAFFLESIA
INTERNATIONAL
SCHOOL

IGCSE (Years 10-11)

 Cambridge Assessment
International Education
Cambridge International School

CAMBRIDGE SECONDARY 1
(Years 7-9)

 Cambridge
Secondary 1

PRIMARY
(Years 1-6)

 ipc

EARLY YEARS

 ieyc



CO-CURRICULAR ACTIVITIES CCA

Co-curricular activities are important to help build and form the social dispositions of the students. This is an opportunity for them to further enhance their hidden potentials and talents. We also believe these activities will help students strike a balance between academic excellence and their social responsibilities in line with our holistic education.



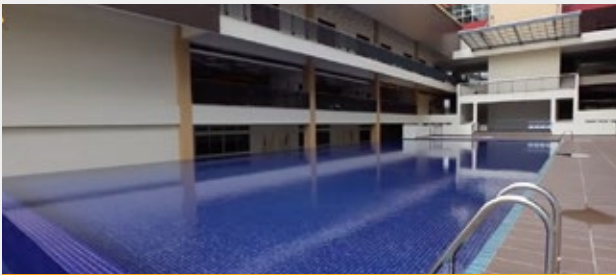
School Facilities



Classroom



Library



Swimming Pool



ICT Lab



Basketball Court



Lecture Hall



Art Room

School Facilities



Science Lab



Music Room



Multi-purpose Hall



Cafeteria

**All photos taken before MCO*

Special Promotional Fee for Nursery, Reception, Year 1 & Year 2

Fee Schedule

Rafflesia International School Puchong
Fee Schedule for Academic Year 2022/23

Application Fee		RM 1,000	
Registration Fee		RM 5,000	
Stage	Year Group	Tuition Fee Per Term (RM)	Deposit (RM)
Early Years	Nursery	5,010	5,010
	Reception	5,010	5,010
Primary	Year 1	6,510	6,510
	Year 2	7,210	7,210
	Year 3	11,100	11,100
	Year 4	11,100	11,100
	Year 5	11,100	11,100
	Year 6	11,100	11,100
Secondary	Year 7	14,100	14,100
	Year 8	14,100	14,100
	Year 9	14,100	14,100
	Year 10	16,600	16,600
	Year 11	16,600	16,600

SIBLING DISCOUNT

The following scheme will apply:

Second and subsequent siblings	10% off tuition fees
--------------------------------	----------------------

Important Notes:

1. Application Fee: Payable upon submission of an Application form. This fee is not refundable nor transferable.
2. Registration Fee: Payable upon receipt of the letter of Offer. This fee is a one-off payment, not refundable nor transferable.
3. The deposit is to be topped up as the student progresses according to the year level. It is non-transferable but refundable, provided that one FULL term's written notice of withdrawal in advance is submitted to the school.
4. All fees must be paid before the commencement of the academic year. These fees are not refundable nor transferable and they cannot be prorated.
5. Tuition Fees are payable termly, there are three (3) terms in an academic year.
6. Tuition Fees are invoiced termly. These fees are payable on or before end of current term.
7. Meal plan, uniform, books (text books, e-books, workbooks & exercise books), educational digital apps, resources fee, co-curricular activities, overseas/outstation trip, educational trip and insurance will be billed separately.
8. All external exam fees are borne by students.
9. All fees are subjected to review and the management reserves the right to revise the terms and conditions.

Payment methods and banking details

Payment can be made by either one of the following methods: Cash / Crossed cheque / Bank draft / Online / Telegraphic Transfer.

CHEQUES PAYABLE TO	Rafflesia School (Puchong) Sdn Bhd
BANK TRANSFER	For payment made Online or via Telegraphic Transfer, please use the following bank details
ACCOUNT NUMBER	23000010293
BANK NAME	Hong Leong Bank Berhad
SWIFT CODE	HLBBMYKL
CONTACT DETAILS	<p>Rafflesia International School Puchong Persiaran Sierra 2, Bandar 16 Sierra, 47100 Puchong, Selangor, Malaysia.</p> <p>Tel: +603 8953 9088 Handphone: 019 279 9088 W: www.ris.edu.my E: admissions.puchong@rafflesia.edu.my</p>

Note:

Please forward a copy of the transaction report to the School's Finance Office via email **finance.puchong@rafflesia.edu.my** stating name of student and year group.

The information presented in this brochure is accurate at time of publishing and subject to change without prior notice. Rafflesia International School Kajang does not accept liability for any error or omission.

WHERE ARE WE?



PUCHONG CAMPUS

Persiaran Sierra 2, Bandar 16 Sierra,
47100 Puchong, Selangor, Malaysia.

+603 8953 9088

admissions.puchong@rafflesia.edu.my

+6019 279 9088

FOLLOW US!

rafflesiainternationalschools

ris.edu.my

Rafflesia International & Private Schools

www.ris.edu.my